

# the Wheelagram



Materials Cleaning Systems Division  
**Wheelabrator-Frye Inc.**

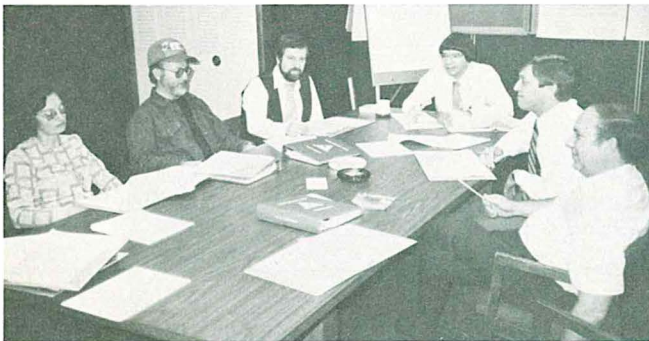
VOL. 7 NO. 2  
NOVEMBER 30, 1984

## EMPLOYEE INVOLVEMENT GAINING MOMENTUM!!

Since our last issue, three new Employee Involvement Teams have been formed. The projects assigned to these new teams are as follows:

**Sales Order System**  
**Sales Presentation**  
**Manufacturing Routing System**

The **Sales Order Team** will be reviewing the "Request for Proposal," "Detail of Order," "A-190 Request" and "Demonstration Request" Forms.



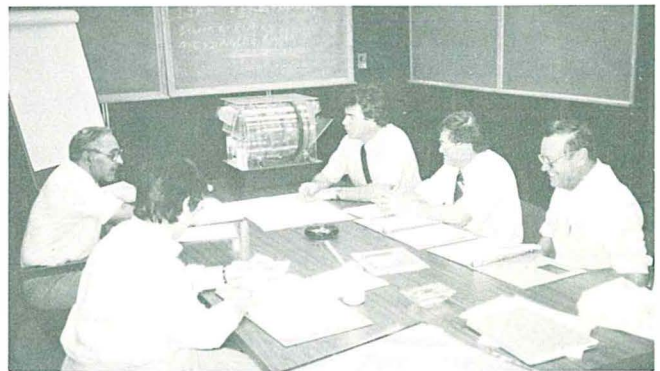
**Carolyn Clayton, Tim Rutledge, Larry Baker, Tom Strantz (Team Leader), Hillary Asher and Norm Baloun** are pictured above working on this project.

### Keeping the momentum —

E.I. is dependent on ideas, your ideas, so, please don't keep them to yourself. When a good thought crosses your mind, share it. Just fill out a Nomination Form and turn it in to a Steering Committee Member. Nomination Forms can be found in the lunchrooms.

**ACTION POSTERS** — Located near each bulletin board is an **Action Poster**. These posters are changed weekly and convey a work related theme for the week. Let's all look for ways to put these themes to use

The **Sales Presentation Team** will be developing Sales Presentations for standard and special machines having repeated sales potential.



Team members assigned to this project are pictured above and include **Lorrie Pfender, John Taller (Team Leader), Tom Warren, Harold Paul and Charlie King.** **Frank Pulice**, not pictured, is also a member of this team.

The **Routing Review Team** will be reviewing the routing of jobs through the shop.



Team members include **Dick Mapel, Bob Nettrouer, Tom VandeWalle, Jack Bell (Team Leader), Butch Verbeke and Harry Breske.**

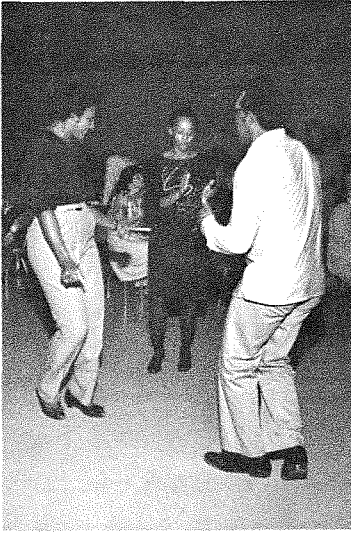
in our own work situation. Doing so will allow each of us to help increase productivity, reduce costs and improve quality.

## A FUN TIME AT THE DINNER DANCE

On Saturday, October 27 a good time was had by all who attended the Athletic Association's Semi-Annual Dinner Dance.

Those who attended advised us that the food was great and the band superb.

Pictured below is proof positive of an enjoyable evening.



## SOFTBALL TOURNAMENT

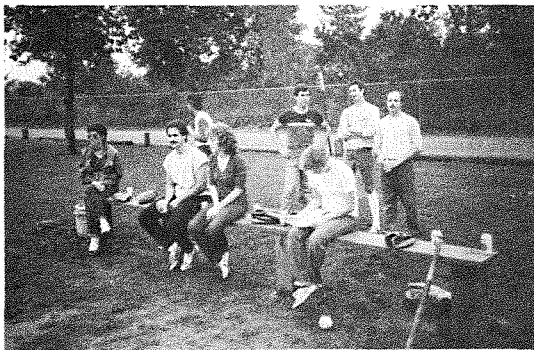
On a recent Sunday afternoon, a number of our employees and their families accepted the challenge to compete in this year's Softball Tournament.

The dreary day did little to dampen the enthusiasm of

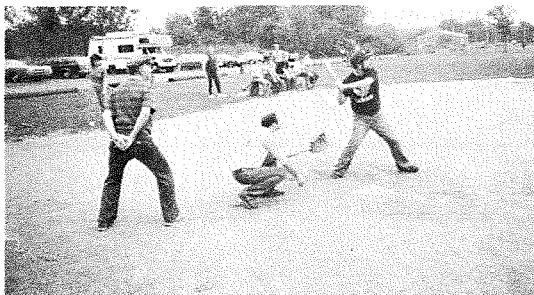
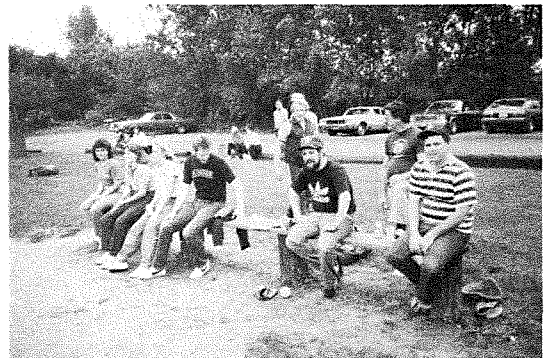
all who participated. Four teams played in the tournament representing the following departments:

**Manufacturing, Marketing, Engineering, First Floor Office**

Some of the day's activities are pictured below:



*With several close games, the First Floor Office Team claims victory as this year's Tournament Winner!!*





# JULIANNA CLUB CHRISTMAS COOKIE SALE

The 1984 Julianna Club Cookie Sale is in full swing. Cookies range in price from \$3.75 to \$6.75 and can be purchased from **Connie Brady, Kathy Campoli, Julia Ciszczon, Carolyn Clayton, Doris Grindeland, Sherry Peyla** and **Adeline Iwaszewski**. The proceeds of this project go toward the Club's Scholarship Fund.

Pictured at right, from left to right are: **Sandy Fox**, Julianna Club president and the co-chairpersons of the cookie sale: **Barb Hillebrand** and **Mary Jo Acrey**.



## FIRE BRIGADE TRAINING

In case of a fire, the Wheelabrator Fire Brigade is prepared to react quickly and professionally.



Pictured above are members of the Fire Brigade practicing effective extinguishing techniques.

**Ray Lambert**, a former assistant fire chief, is in charge of the Brigade. Other members include: **Larry Arndt, Glen Britton, Leroy Danzy, Ray Gervais, Paul Hillebrand, Dave LaPlace, Ralph Platz**.

## FLU SHOTS

Again this year, Wheelabrator provided flu shots to employees wishing protection against this year's "Flu-Bug."



Pictured above is our company physician, **Dr. Charles Walters**, giving the flu shot to **Russell Glassman**.

## SERVICE MILESTONES

### ONE YEAR

**John (Jack) Carr**  
**John Thomas**

### TEN YEARS

**John Grisso**

### TWENTY-FIVE YEARS

**Russell Glassman**  
**Eldon Duerksen**

## BEST WISHES TO OUR RETIREES

**John Smith** — Blastrac Assembly

**Rene Taghon** — Stores

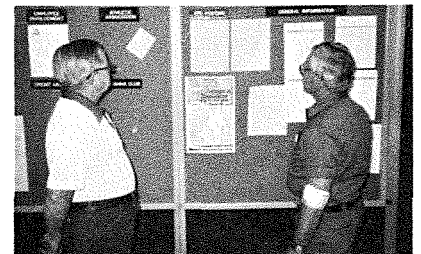
**Martin White** — Machine Shop

## BULLETIN BOARDS TAKE ON A NEW LOOK

As part of our overall program to improve communication, our bulletin boards recently underwent a "face-lifting."

We now have 6 company bulletin boards. We intend to use them as another way of helping provide you with timely and up-to-date information about our company and things that affect you as an employee.

Pictured at right are two of our employees, **Jim Fowler** and **Jim Austin**, who are reading a recently posted notice.



## CONGRATULATIONS ON YOUR NEW ASSIGNMENT

<b>Butch Gibbens</b>	to	Foreman Assembly
<b>John Roberts</b>	to	Industry/Product Manager
<b>Joe Rudlaff</b>	to	N/C Programmer
<b>Tom Warren</b>	to	Manager, Special Project Sales

## SCHOLARSHIP PROGRAM ANNOUNCED

The company recently announced its Scholarship Program for students who plan to attend college on a full time basis in the fall of 1985.

Two scholarships will be awarded, each in the amount of \$1,500 per year for up to four years. Selected scholarship recipients will be able to attend an accredited college of their choice.

Scholarship selections will be based on:

- Financial Need
- Academic Ability & Potential
- Moral Character; Seriousness of Purpose; Prospect For Successful Completion of College Work; Qualities Of Citizenship; and General Aptitude For The College Course Selected

Employees and children of employees may apply for scholarship consideration. Interested candidates should contact the Personnel Department to obtain detailed application procedures.

## WE'RE OVER THE TOP

Again this year Wheelabrator employees responded to the area United Way Campaign by exceeding its goal of \$28,000.



Pictured above is **Bob Orth**, presenting his contribution (which put us over the top) to Co-Chairpersons, **Mary Lou Rethlake** and **Maurice Bonne**.

In behalf of the United Way and the many helping services which it supports, we'd like to **Thank** all of you for your generous support.

## WELCOME TO WHEELABRATOR

### NEW HIRES AND REHIRED EMPLOYEES

Nancy Ash	—	Purchasing
Shirley Hiner	—	Payroll
Francella Martinez	—	Sales
Tammy Meersman	—	Engineering
Karen Pynaert	—	Accounting
Mary Gaye Wetzell	—	Finance
Richard Zuber	—	Engineering

### RECALLED EMPLOYEES

Eugene Baughman	—	Machine Shop
Oren Grubb	—	Machine Shop
Benjamin Gasko	—	Machine Shop
Robert Jolliff	—	Machine Shop
Donald Ritter	—	Machine Shop
William Van Antwerp	—	Fabrication

## BEST WISHES TO WHEELABRATOR RETIREES

On **John Medich's** last work day, a number of his co-workers surprised him with a Good Luck gathering in the Maintenance Department.



A gathering was also held at the Elks to honor **Elaine Grau, Ruth Rohleder, Kenny and Jean Vergon**. Below is a snapshot of the evening's honorees.



Hourly retirees and their spouses got together for an evening of food and fun at the BK as evidenced by the picture below.



## CALENDAR OF EVENTS

Julianna Club Christmas Party Marriott Hotel	Thurs., Dec. 6
Salvation Army Bell Ringers Krogers, 12th Street	Sat., Dec. 15
Christmas Turkey Distribution South Guard Gate	Tues., Dec. 18
Holiday	Mon., Dec. 24
Holiday	Tues., Dec. 25
Holiday	Mon., Dec. 31
Holiday	Tues., Jan. 1

**NOTE: Volleyball every Wednesday at Northside School (6:45 to 8:45 p.m.) EXCEPT DEC. 26 and JAN. 2.**